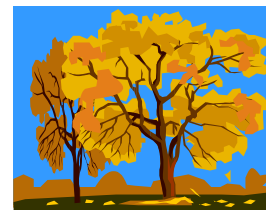




# Cardiff Outdoor Group



Oct 06

**New Members always welcome**

**President**  
Bob Hall

## Committee

**Chair:**  
Clive C 2090 2164

**Secretary:**  
Bob N 2057 5229

**Committee Members:**  
Chris L 2023 8576  
Catherine H 2062 4416  
Katherine T 2088 1572  
Jane O 2040 2571  
Julian L 2056 7013  
Lyndon M 2075 6122  
Jane S 2075 9980  
Rhona 2086 0181

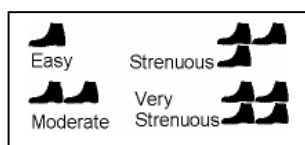
**chapter** (Market Rd, Canton) is our Tuesday night venue. Why not join us in the bar after the meeting.

**If you would like to bring children (under 17) or dogs, please check first with the event organiser**

**Fancy arranging any events?** Your ideas are very welcome; please contact Rhona or Katherine T (Weekends) or Catherine H (Tuesdays)

## Walk Grading

The grade key below refers to the terrain, not the distance, which is shown separately for each event.



### Sunday 1<sup>st</sup> - Grwyne Fawr and Crug Mawr Walk

A 7.5 mile walk enjoying the varied landscape of the Grwyne Fawr valley, including a steady but not too difficult climb up to Crug Mawr for some all-round views. Optional visit to the Skirrid Inn on the way home. Meet at the Museum at 9.30am. Contact Viv 2076 3810



### Tuesday 3<sup>rd</sup> October – Opera at WMC

WNO is performing La Boheme at Wales Millennium Centre Contact Julian on 2056 7013 for details and bookings by Tuesday 12th September. Target price is £10.

### Sunday 8<sup>th</sup> – Gower Walk

A 8/9 miles coastal and moorland walk, taking in Weobley Castle, Llanrhidian Sands and Loughor Estuary. Meet at the museum at 9.30am. Contact Sian D on 01446 719697.



### Tuesday 10<sup>th</sup> Albania Talk

Hear about the trip 3 members undertook this summer. Meet Chapter 8.00pm. Contact Bob H 2075 6203

### Saturday 14<sup>th</sup> – Tal-Y-Bont Trial

20 or 10 mile Mountain Marathon held in the lesser walked Brecon Beacons area - organised by NOGs. Fancy joining me on the 10 miler then a packed lunch and snacks required! Contact Enid in advance on 2065 5253.



### Sunday 15<sup>th</sup> - Ystradfelte walk

It's that time of year again: blue skies, golden leaves, and waterfalls. A delightful 9 mile walk in and around the Ystradfelte area, including going behind that waterfall. Waterproofs or skinny-dipping essential. Meet 9.30 a.m. at the museum. Phone Clive 2090 2164



### Tuesday 17<sup>th</sup> Northumberland Talk

Hear about a fantastic, largely undiscovered part of the country, with coastline, moorland and history. Meet Chapter at 8.00pm Contact Julian 20567013

### Saturday 21<sup>st</sup> - Llanthony to Abergavenny Walk

The Three Peak's "B" route from Llanthony up to Bal Mawr, over to Pen Cerrig Calch then Sugar Loaf and Abergavenny. Much better (and harder) than the main route. Names to Steve B (07812 586949) before Wednesday 18th October



### Sunday 22<sup>nd</sup> - Taff Trail part 15

Storey Arms to Llwyn Onn. An easy seven mile linear walk through the Brecon Beacons, passing the source of the Taff. Meet museum 10am. Contact Julian L. 2056 7013 or 07773 228290.



### Sunday 22<sup>nd</sup> - Small Cog Walk

For details contact Gabby & Pedro 029 01656 742962

### Tuesday 24<sup>th</sup> Pizza time

Meal at Pizza Express in St Mary's Street. Names to Katherine T on 2088 1572 by 20<sup>th</sup> October. Meet at Pizza Express at 7.30pm



### Sunday 29<sup>th</sup> - The Raven Walk

12 mile circular route high above the Sirhowy and Ebbw Valleys, crossing moorland, farmland and providing many different views including the Severn Estuary, Gwent and Somerset levels and the Brecon Beacons. Meet at Museum at 9.00am. Contact: Sue 029 20747192



### Tuesday 31<sup>st</sup> Halloween

Short walk and tall tales for Halloween around Llantrisant Meet 7.00 at the Museum or 7.30 at the car park on Llantrisant Common. Bring torches and suitable footwear. Meet at the Bear afterwards around 9ish. Contact Sian 01446 719697



### Advance notice – Tues 7<sup>th</sup> Nov -AGM

Your chance to elect a new committee, vote on burning issues and generally air your views. Any ideas for motions, or if you want to stand for committee? Let Clive know in advance. Tel 2090 2164. Chapter 8.00pm

Visit [www.cardiffoutdoorgroup.org.uk](http://www.cardiffoutdoorgroup.org.uk) or email [info@cardiffoutdoorgroup.org.uk](mailto:info@cardiffoutdoorgroup.org.uk)